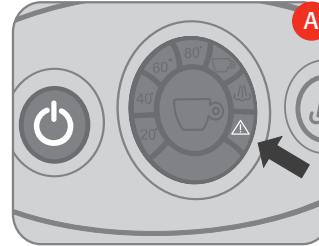


decalcification

The machine keeps track of its overall use and based on the quantity of coffee or steam delivered may require a decalcifying cycle, signaled by the flashing of the triangular icon (1 flash every 2 seconds) **A**

The machine is equipped with an automatic program for optimum cleaning and removal of calcium residue from the inside of the machine

To perform the cleaning program it is advisable to use the decalcifying agent supplied with the machine **B**

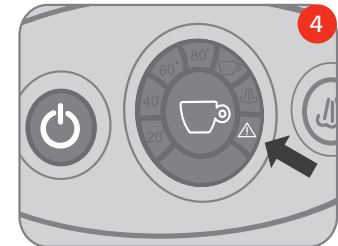
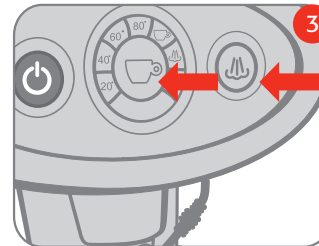
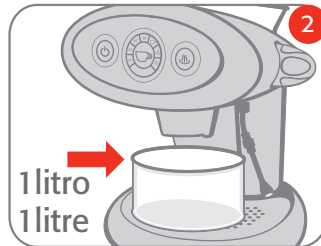
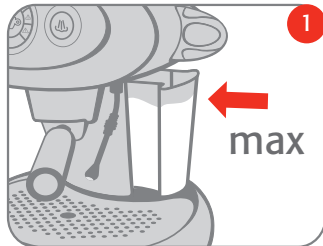


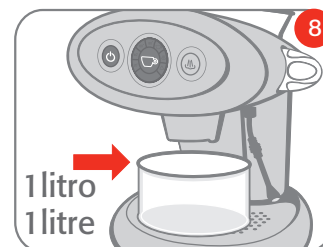
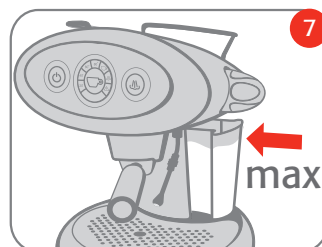
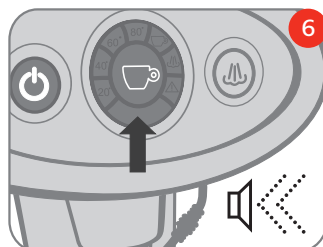
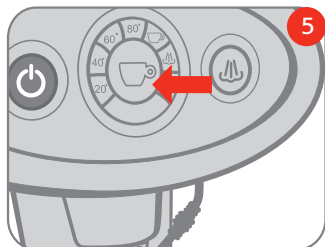
Starting the procedure:

Fill the tank with 1 liter of water (up to the MAX level) **1**; pour in the decalcifying product supplied with the machine; wait for it to dissolve

Remove the capsule and the holder, place an empty container with a capacity of at least 1 Lt under the delivery unit **2**


Press the coffee switch ☐ and the steam switch ☐ simultaneously for at least 5 seconds **3**; the coffee switch ☐ and the triangular icon ☐ start flashing **4**





Press the coffee switch  to start the decalcification cycle the coffee switch  turns off **5**

The machine automatically starts performing washing cycles at set intervals

At the end of the automatic decalcification cycle, lasting approx. a half hour, the machine emits an beep and the coffee switch  starts flashing again **6**

Remove and empty the tank; wash it and fill it with 1 lt of fresh water (up to the MAX level) **7**; empty the container and place it under the delivery unit **8**

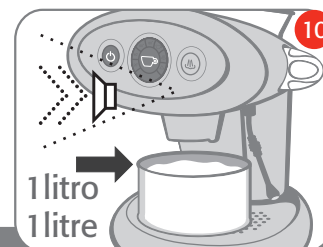
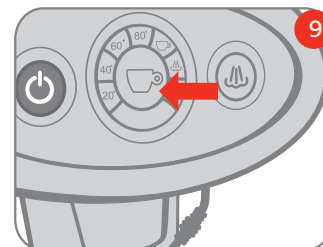
Press the coffee switch to start the rinsing cycle; the coffee switch  turns off **9**

The machine starts delivering water at set intervals lasting a few minutes

At the end of the rinsing cycle the triangular icon stops flashing and the machine emits beep **10**

Empty the container

The machine is ready to be used



WARNING:

- Should a power outage occur while performing the decalcification procedure, it will be necessary to repeat the procedure from the start
- If the decalcification procedures are not performed, calcium may cause malfunctioning not covered by the warranty
- It is advisable to use our decalcification agent **B**
- Do not use vinegar, lye, salt, formic acid because they may damage the machine